

WELCOME HOME

— APPLYING FOR —
STANFORD GRADUATE HOUSING



2020 - 2021

(Clockwise from left) Lyman Graduate Residences, Exterior; Kennedy Graduate Residences, Front Desk; Escondido Village Graduate Residences, Interior; Escondido Village Graduate Residences (rendering); Munger Graduate Residence, Interior



studenthousing.stanford.edu

TABLE OF CONTENTS

- Applying for Housing 3
- Assignment Process 4-5
- Graduate Housing Options 6-11
- Residence Choices and Rates 12-13
- Move-in Information 14
- Campus Dining 15
- Contact Information 16



APPLYING FOR GRADUATE HOUSING

HOW TO APPLY

Apply online through Axess (axess.stanford.edu). Submit your application between **April 3, 2020** and **May 7, 2020** to participate in the first round Lottery.

- New students are only guaranteed housing if they apply by the May 7 deadline, and select “assign me to any residence for which I am eligible” as their final application choice.
- Continuing students must renew by the May 7 deadline.

If you apply after the May 7 deadline, you will receive a sequential application number based on the date you submit your application.

You will need a **SUNet ID** to apply for housing. Instructions for obtaining a SUNet ID are included in your admission mailing. **Please set up your SUNet ID immediately after receiving your letter of admission.** You should be able to apply for housing in Axess within about 48 hours of creating your SUNet ID.

On your application, you will select the quarter you want your housing to start, your category of housing (single, couple without children, or student with children) your requested move-in date, and rank all your residence choices.

To improve your chances of being assigned to your desired housing, rank ALL apartment locations in the order you would like to be assigned until you have no further preferences.

If you would like to move into housing starting in summer 2020, submit two applications by the May 7 deadline, one for summer 2020 and another for the 2020-21 year starting in autumn.

DISABILITY/MEDICAL ACCOMMODATIONS

If you, your spouse, partner or child have particular housing needs due to a documented disability or medical condition, you may participate in the Medical Accommodation Lottery, which takes place prior to the main Lottery. More information is available at rde.stanford.edu/studenthousing/medical-accommodations

- Register with the Office of Accessible Education by **March 30.** oaeconnect.stanford.edu
- Submit a housing accommodation request form with the Office of Accessible Education between **March 23** and **April 13.**
- Submit a housing application in Axess by **April 13.**

REASSIGNMENTS

After the Lottery assignments are announced, students may apply for reassignment. Reassignments will begin each quarter after the demand from unassigned students is met.

If your family status changes, you should apply for housing in your new category as soon as you know about the change in family status.

ROOMMATES IN SHARED HOUSING

If you are a single student assigned to a shared apartment, your roommate will be matched based on the roommate preferences you list on your application.

If you would like to live with specific friends, you are able to apply with a group of up to four students. If all group members have the same priority level and are the same gender, they are likely to be kept together.

rde.stanford.edu/studenthousing/applying-group-graduate-housing

For information on applying with friends of different genders: rde.stanford.edu/studenthousing/gender-neutral-housing

HOUSING APPLICATION DEADLINES, 2020-21

QUARTER	ASSIGNMENT ROUND	APPLICATION DEADLINE	ASSIGNMENTS ANNOUNCED
Autumn	Medical accommodations	Now - March 30 to register with OAE April 13 to apply for housing	May 6
	First-round Lottery and renewal assignments	May 7	May 23
	Second round assignments	June 28	July 17
	Rolling assignments	June 29 – October 23	July 27 to October 23
Winter	First round assignments	October 23 (apply as early as possible beginning April 3)	November 14
	Rolling assignments	October 24 – February 5	November 16 to February 5
Spring	First round assignments	February 5, 2021 (apply as early as possible beginning April 3)	February 27
	Rolling assignments	February 6–April 30	March 1 to April 30

This guide provides important application information and descriptions of the graduate residences. It is also available online at thelottery.stanford.edu.



HOW ASSIGNMENTS ARE MADE

R&DE Student Housing uses a lottery to assign housing to graduate students. You are assigned according to (1) your assignment priority level, (2) a random lottery number and (3) your housing choices.

When the program gets to your priority level and lottery number, it will place you into the highest available residence on your preference list. If all of the residences you have listed are full, you will be assigned by your final choice.

If you select “assign me to any residence for which I am eligible,” you could be assigned to any housing option except the most expensive housing options in Munger and the GSB Residences. The system will assign you to a residence that is left over at the end of the process.

If you select “assign me only to the residences I have listed,” you will not be assigned if we cannot assign you to a residence you have listed. First-year students who select this option and are not assigned in the first round will be able to join future assignment rounds with high priority but are no longer guaranteed.

In either case, we strongly recommend that you rank as many choices as possible to improve your chance of being assigned by your preferences.

FIRST-YEAR GRADUATE STUDENTS

If you are enrolled in a Stanford graduate degree program for the first time, housing is guaranteed for your first year if

- You apply by the Lottery deadline – **May 7, 2020**.
- You select “assign me to any residence for which I am eligible” as your final application choice. (Students selecting this choice will not be assigned to Munger or the GSB Residences unless they have specifically listed them.)

If you apply after the deadline or have restricted housing choices, you will lose your first-year guarantee. However, you will still be considered with high priority for housing before continuing students and students with no priority.

Your first-year assignment priority is only effective during your first academic year of graduate study. It cannot be used later even if you are admitted to an additional degree program.

Students beginning a second graduate degree program are considered continuing students. Co-terminal students are considered continuing students with a low priority and are not guaranteed housing.

ORDER FOR ASSIGNING STUDENT HOUSING

1. Student staff and students needing medical accommodations.
2. Students with medium priority on-campus who are renewing their spring housing for the next year.
3. Students with medium priority living in subsidized off-campus housing who apply for the same category.
4. Guaranteed first-year students who applied by the deadline and have chosen to be assigned to any residence for which they are eligible.
5. First-year students with high priority who limited their housing choices or applied after the Lottery deadline.
6. Students with medium priority who are not renewing.
7. Students with low priority.
8. Students with no priority.
9. Non-matriculated students.

CONTINUING STUDENTS

After Your First Year

Your options after your first year are based on your housing priority. (See chart on next page.)

- Students with medium priority who want to stay in the same on-campus apartment may be able to renew annually and bypass the May Lottery. (This can be done in Axxess.)
- Students who want to change residences or who are not eligible to renew their housing should join the May Lottery.

PRIORITY BY DEGREE

Random Lottery Number

The best numbers (lowest numbers) are randomly assigned to students who apply for housing by the Lottery deadline. Students who miss the May deadline will receive a sequential number based on the date the application was submitted.

Assignment Priority is determined by:

1. Your student status (first-year or continuing graduate student)
2. Your degree program (PhD, master’s, etc.)
3. The total number of years you have lived in graduate housing

PROGRAMS	HOUSING CATEGORY	YR 1	YR 2	YR 3	YR 4	YR 5	YR 6	YR +7
Doctoral degree candidates	All categories	G/H	M	M	M	M	M	N
Medical students in the MD program	All categories	G/H	M	M	M	M	N	N
Law students in the JD program	All categories	G/H	M	M	N	N	N	N
Coterminal students	All categories	L	N	N	N	N	N	N
Master’s students	Single graduate	G/H	L	N	N	N	N	N
	Couple without children	G/H	L	N	N	N	N	N
	Student with children	G/H	M	N	N	N	N	N
Non-matriculated students	All categories	N	N	N	N	N	N	N

CHART LEGEND

G/H = High Priority | Can apply through Lottery

- Students in the first year of their first graduate degree program at Stanford (does not include co-terminal students) are guaranteed housing, (G) if they apply by the Lottery deadline and are willing to accept any assignment.
- First-year students who miss the deadline or are not willing to accept any assignment are no longer guaranteed but are given a high priority (H) and are considered for housing before students with lower priority levels.

M = Medium Priority | Can renew if in on-campus housing

- Continuing doctoral students with priority years who have already had a year of guarantee or high priority.
- Master’s students applying for a second year of housing who are living in students with children housing.

L = Low Priority | Cannot renew but can apply through Lottery

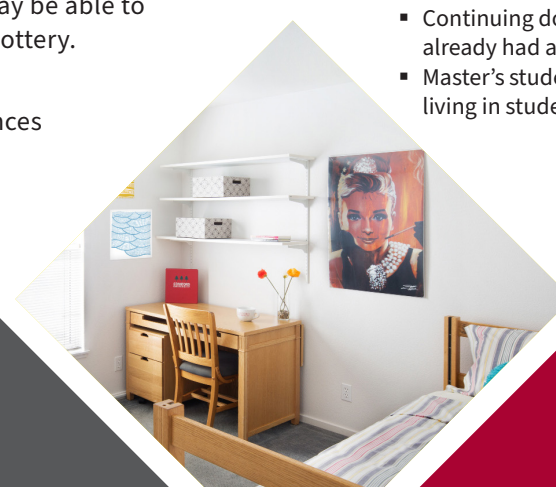
- Master’s students applying for a second year of housing who are living in single graduate or couple without children housing.
- Co-terminal students in the first year of eligibility for graduate housing who have used their four years of undergraduate housing.

N = No Priority | Cannot renew but can apply through Lottery

- Students who have used their housing priority years.
- Non-matriculated students, such as postdoctoral scholars and visiting researchers.

Special Off-campus Priority for Lottery 2020

Doctoral students living in the off-campus subsidized apartments will have a special priority when they apply for housing in the 2020 Lottery for their same category of housing. They will be assigned ahead of first-year students, since they will not be able to renew in place.



ON-CAMPUS GRADUATE HOUSING CHOICES

Graduate Housing

Stanford offers housing to single students, students with domestic partners of any gender, and students with children. All housing is smoke-free. Pets are not allowed, although some animals are approved for medical reasons.

Graduate residences include studios and apartments with one to four bedrooms. Information on housing choices can be found on pages 6-11 or at rde.stanford.edu/studenthousing/housing-options.

In Every Apartment

Students can expect bedroom furnishings such as a bed, dresser, nightstand, closet, desk and desk chair. Kitchens are generally equipped with refrigerator/freezer, electric stove, self-cleaning oven, and sink with garbage disposal. Living spaces are commonly furnished to include coffee table, dining room table with chairs, raised small table with chairs, or counter with chairs and a sofa.

Residents pay no additional charge for utilities (water, heat, electricity, garbage, sewer). Wifi and long-distance VoIP calling is available in all residences and is included in your quarterly technology fee.

STANFORD VS. PALO ALTO COMPARISON

Monthly Rent
(Average per person in a 2-BR Shared Apartment)

\$1,349*

\$2,072**

Utilities
(Water, sewer, garbage, electricity, gas - low estimate)

Included

\$200

Internet
(Cost per person - double occupancy)

\$74/quarter
(2019-20 rate)

\$35/month

Furniture
(Average per person - one time expense)

Included

\$1,000

Laundry
(Per person per month)

Included

\$20

Commute
(Approximate closest and furthest distances from Stanford Main Quad)

2-7 minute bike

7-25 minute bike

6-25 minute walk

25-90 minute walk

* Cost of 2 bedroom apartment in Escondido Village, Lyman and Rains.

** Based on 2019 Market Rent Survey.

Alternative transportation programs are offered to support residents who are able to go car-free. For more details visit transportation.stanford.edu.

For information about parking availability near residences and around campus, please visit: transportation.stanford.edu/parking.

Rains Houses

One of Stanford's largest housing complexes, Rains accommodates single students in two-bedroom, one-bath and four-bedroom, two-bath apartments located in three-story buildings clustered around lawns and courtyards. This residence includes fragments of the Hacienda – an adobe winery built in 1875 – and a restored Buttery from the same era.



Rains, Bedroom



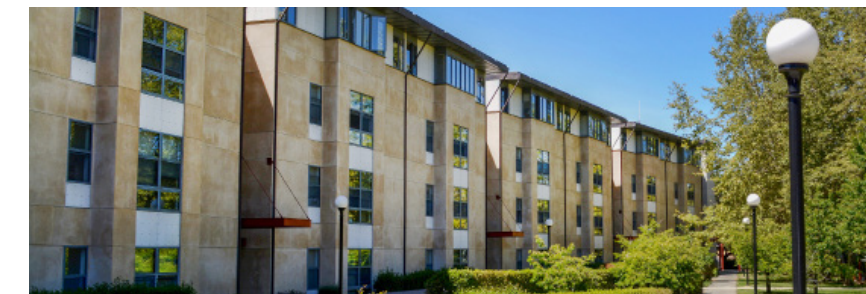
Rains, Exterior



Lyman Graduate Residences, Lounge

Lyman Graduate Residences

Located on the west side of campus, close to the Medical Center and the Science and Engineering Quad, this complex includes two residential buildings housing single students in two-bedroom, one-bath apartments. Common areas are located in the central commons building.



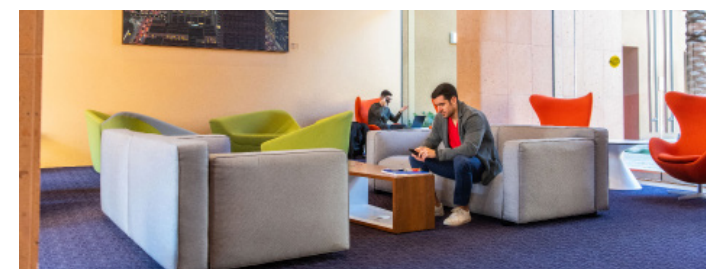
Lyman Graduate Residences, Exterior

GSB Residences

Stanford's Graduate School of Business (GSB) manages the GSB Residences, located across from the GSB on Jane Stanford Way.

Jack McDonald Hall and Schwab Residential Center offer studio apartments with shared kitchens. Most spaces are assigned to first-year GSB students.

Note: The GSB Residences are not automatically included if you indicate on the housing application that you are willing to be assigned anywhere.



GSB Residences, Jack McDonald Hall, Commons Interior



GSB Residences, Exterior

Munger Graduate Residence

Conveniently located, Munger's five apartment buildings are adjacent to the Law School and a short walk from White Plaza.

Studios and a limited number of one-bedroom apartments are available to couples. Studios, two- and four-bedroom apartments are available for singles. Each student has a private bedroom and bathroom. Law students have priority for assignment for 50% of Munger spaces.

The Market at Munger, in Jacobson-Sorensen Hall, offers fresh produce, grab-and-go meals and a number of grocery and household items.

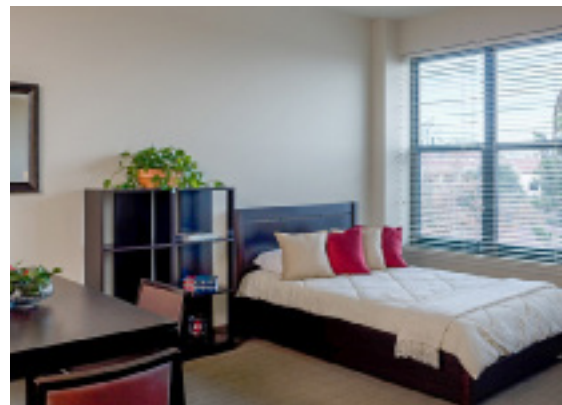
Note: Munger is not automatically included if you indicate on the housing application that you are willing to be assigned anywhere.



Munger Graduate Residence Exterior



Munger Graduate Residence, Living Room



Munger Graduate Residence, Bedroom



Kennedy Graduate Residences, Living Room

Kennedy Graduate Residences in Escondido Village

Apartments include premium two-bedroom, two-bath apartments with shared living room and kitchen, junior two bedroom, two bath units with shared kitchens for single students, and premium studios available to couples. Each student has a private bedroom and bathroom.



Kennedy Graduate Residences, Exterior

Escondido Village & Escondido South Low Rises

Home to couples, families and single students in one- to four-bedroom apartments. These units are located in one- and two-story low rise buildings arranged around grassy fields, picnic areas and communal courtyards. Family apartments have fenced patios and access to gated play areas.



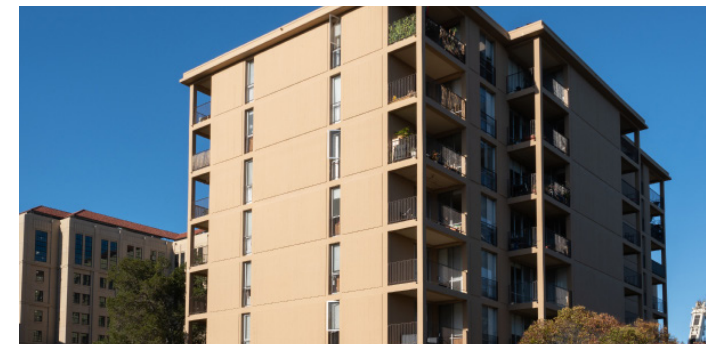
Escondido Village Low Rises, Exterior



Escondido Village Low Rises, Laundry Room



Escondido Village Low Rises, Bedroom



Escondido Village Mid Rises and High Rises, Exterior



Escondido Village Mid Rises and High Rises, Interior

Escondido Village Mid Rises and High Rises

Five eight-story mid-rise buildings -- Abrams, Barnes, Hoskins, Hulme and McFarland -- offer one-bedroom apartments for couples without children. Each apartment has a sliding glass door that opens onto a balcony. In McFarland, all units have been remodeled into junior two-bedroom, one bath apartments for two single students. The kitchen was enclosed and the living room was converted into a second bedroom with a large closet and locking bedroom door. McFarland is assigned as a junior two-bedroom, one bath apartment for two single graduate students or as a one-bedroom, one bath compact for a couple. Lobbies, lounges, and other common spaces provide areas for social activities.

Escondido Village also includes two 12-story towers, Blackwelder and Quillen. Each building has 110 junior two-bedroom, one bath apartments shared by two single students. Common spaces in each building include lounges for social activities, barbecue and picnic areas, computer clusters, and a piano practice room.

Escondido Village Studios

Six buildings in Escondido Village accommodate 834 graduate students in single-person and couples without children studio apartments. Each studio provides about 325 square feet of space, and combines living and sleeping quarters that include a kitchen and private bathroom. Common areas in each of the six buildings include lounges, computer clusters, and laundry facilities.



Escondido Village Studios, Interior



Escondido Village Studios, Exterior

CAMPUS LIVING REIMAGINED

Escondido Village Graduate Residences (EVGR), Stanford's newest on-campus residential community, combines functional floor plans with a host of features to help students feel at home. This includes support for academic endeavors, space to pursue personal passions, and plenty of opportunities to engage with a diverse community of your peers. With so much to offer, EVGR is destined to become the heart of graduate student life on campus.

EACH RESIDENTIAL FLOOR INCLUDES

- Wellness room
- Community room (kitchenette/TV lounge)
- Huddle rooms (multiple)
- Laundry room
- Three-stream recycle/trash chute room

EACH RESIDENTIAL BUILDING INCLUDES

- Student lounge
- USPS Mailroom (one mailbox per student; plus numerous USPS parcel lockers for packages)
- Game room
- Music practice rooms
- Makerspace

COMMUNITY CENTER

The first floor spaces of Buildings B and C, at the center of EVGR, provide a variety of common spaces open to all residents of EVGR and the Stanford graduate community.

- Community and meeting rooms
- Music/performance/recital room
- TV lounge
- Makerspace
- Aerobics and dance studios
- Multi-purpose space
- Game room
- Computer cluster
- Kids playroom
- Student Housing and Graduate Life Office offices

THE PAVILION AND MARKETPLACE

Building C is home to a marketplace that includes:

- Dinner meal plan*
- Grocery staples
- Grab-and-go meals
- Gourmet coffee roastery
- Teaching kitchen

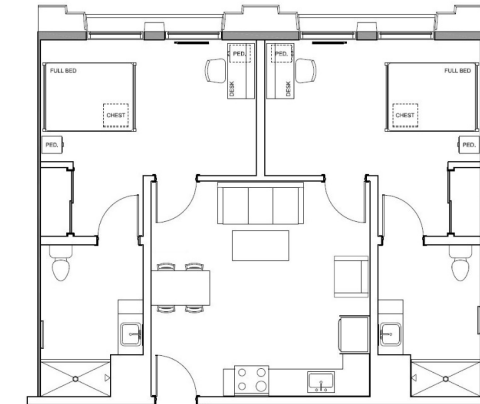
*New Meal Plan: Students will be able to purchase dinner meal blocks for the all-you-care-to-eat dinner buffet.

The marketplace will also feature 24-hour keycard entry and innovative vending, to serve you around the clock.

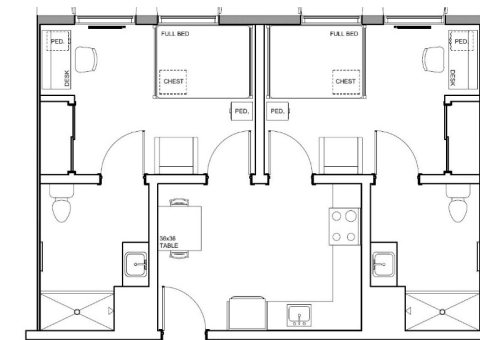
The Pavilion, immediately adjacent to the marketplace in Building C, features a pub that will offer fresh and flavorful menu choices prepared with locally- and sustainably-sourced ingredients and vegan, vegetarian, and gluten-free options. The pub opens onto a spacious outdoor biergarten with soft seating and fireplace – the ideal spot to enjoy a meal in the sun with friends or family, study or meditate or grab a beer at the end of a long day. The pub will also feature a living and learning lab offering beer-making classes.



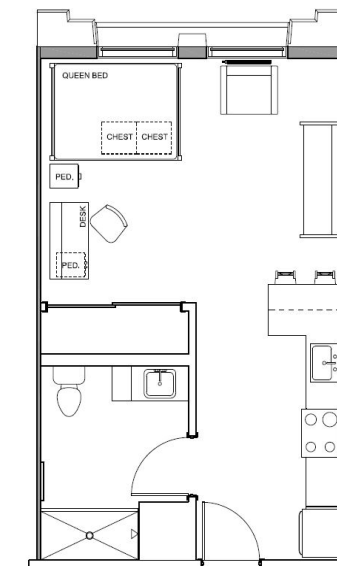
APARTMENT LAYOUTS



**Premium Two-Bedroom,
Two-Bath**
647 units – 1,294 beds
876 SqFt



**Junior Two-Bedroom,
Two-Bath**
288 units – 576 beds
665 SqFt



**Premium Studio
Apartment**
553 units – 553 beds
438 SqFt



DETAILED LIST OF RESIDENCE CHOICES & RATES

SINGLE GRADUATE HOUSING

Residence	# of Bedrooms	# of Baths	Occupancy	Monthly Rate (per person)	Contract Length	# of Spaces	Average Square Footage	Bed Size	Living Room	Kitchen
■ Studio Apartments Private living/bedroom area, bath and kitchen										
Escondido Village Graduate Residences, premium	none	one	single	\$2165/month	full year & academic year	253	438	queen	living/bedroom	eat-in kitchen with stools
Escondido Village Kennedy Residences, premium	none	one	single	\$2071/month	full year	6	439	queen	living/bedroom	eat-in kitchen with stools
Escondido Village, standard	none	one	single	\$1688/month	full year	643	325	full-extra long	living/bedroom	eat-in kitchen with stools
Munger Graduate Residence, premium	none	one	single	\$2382/month	full year & academic year	36	500	queen	living/bedroom	dining table & chairs
Munger Graduate Residence, standard	none	one	single	\$2223/month	full year & academic year	74	450	full-extra long	living/bedroom	eat-in kitchen with stools
■ Shared Premium Apartments Private bedroom and bath, shared kitchen and living/dining room										
Escondido Village Graduate Residences	two	two	double	\$1688/month	full year & academic year	1,294	876	full-extra long	shared	dining table & chairs
Escondido Village Kennedy Residences	two	two	double	\$1661/month	full year	108	878	full-extra long	shared	dining table & chairs
Munger Graduate Residence	four	four	quadruple	\$1883/month	full year & academic year	284	1725	full-extra long	shared	dining table & chairs
Munger Graduate Residence	two	two	double	\$1906/month	full year & academic year	62	1050	full-extra long	shared	dining table & chairs
■ Shared Standard Apartments Private bedroom, shared bath, kitchen and living/dining room										
Escondido South, low-rise	three	one	triple	\$1177/month	full year	69	800	twin-extra long	shared	dining table & chairs
Escondido South, low-rise	two	one	double	\$1349/month	full year & quarterly	38	650	twin-extra long	shared	dining table & chairs
Escondido South, low-rise	four	one	quadruple	\$909/month	full year	8	1050	twin-extra long	shared	dining table & chairs
Escondido Village, low-rise	three	one	triple	\$1177/month	full year & quarterly	132	800	twin-extra long	shared	dining table & chairs
Escondido Village, low-rise	two	one	double	\$1349/month	full year & quarterly	206	650	twin-extra long	shared	dining table & chairs
Lyman Graduate Residences	two	one	double	\$1349/month	full year	224	590	twin-extra long	shared	dining table & chairs
Rains Houses	four	two	quadruple	\$1342/month	full year	287	1000	full-extra long	shared	dining table & chairs
Rains Houses	two	one	double	\$1349/month	full year	492	500	full-extra long	shared	dining table & chairs
■ Shared Junior Apartments Private bedroom and bath, shared eat-in kitchen, no living room										
Escondido Village Graduate Residences	two	two	double	\$1375/month	full year & academic year	576	665	full-extra long	none	eat-in kitchen with stools
Escondido Village Kennedy Residences	two	two	double	\$1256/month	full year	220	679	full-extra long	none	eat-in kitchen with stools
■ Shared Junior Apartments Private bedroom, shared bath, eat-in kitchen, no living room										
Escondido Village, high-rise and McFarland mid-rise	two	one	double	\$969/month	full year	480	460	twin-extra long	none	eat-in kitchen with stools
■ GSB Residences Private entrance, bedroom and bath, shared eat-in kitchen, no living room										
GSB Residences, Jack McDonald Hall	two	two	double	\$2055/month	academic year	198	700	full-extra long	none	shared
GSB Residences, Schwab Residential Center	two	two	double	\$2005/month	academic year	170	700	full-extra long	none	shared

COUPLE WITHOUT CHILDREN HOUSING

Residence	# of Bedrooms	# of Baths	Occupancy	Monthly Rate (per apt.)	Contract Length	# of Spaces	Average Square Footage	Bed Size	Living Room	Kitchen
■ Studio Apartments										
Escondido Village Graduate Residences, premium	none	one	couple	\$2165/month	full year & academic year	300	438	queen	living/bedroom	eat-in kitchen with stools
Escondido Village Kennedy Residences, premium	none	one	couple	\$2071/month	full year	102	439	queen	living/bedroom	eat-in kitchen with stools
Escondido Village, standard	none	one	couple	\$1688/month	full year	191	325	full-extra long	living/bedroom	eat-in kitchen with stools
Munger Graduate Residence, premium	none	one	couple	\$2382/month	full year & academic year	126	500	queen	living/bedroom	dining table & chairs
■ One-Bedroom Apartments										
Escondido Village, mid-rise, McFarland	one	one	couple	\$2173/month	full year	43	450	queen	private	dining table & chairs
Escondido Village, mid-rise	one	one	couple	\$2193/month	full year	251	450	queen	private	dining table & chairs
Escondido Village, low-rise	one	one	couple	\$2193/month	full year	40	450	queen	private	dining table & chairs
GSB Residences, Jack McDonald Hall	one	two	couple	\$3065/month	academic year	6	700	queen	private	dining table & chairs
GSB Residences, Schwab Residential Center	one	two	couple	\$3015/month	academic year	8	700	queen	private	dining table & chairs
Munger Graduate Residence	one	one	couple	\$3113/month	full year & academic year	18	650	queen	private	dining table & chairs
Escondido Village, low-rise with den	one	one	two-student couple	\$2498/month	full year	6	700	queen	private	dining table & chairs
■ Two-Bedroom Apartments										
Escondido Village, low-rise	two	one	two-student couple	\$2698/month	full year	N/A	740	queen	private	dining table & chairs

STUDENT WITH CHILDREN HOUSING

Residence	# of Bedrooms	# of Baths	Occupancy	Monthly Rate (per apt.)	Contract Length	# of Spaces	Average Square Footage	Bed Size	Living Room	Kitchen
Escondido Village / Escondido South low-rise	two	one	family with one or two children	\$2429/month	full year	179	740	one queen & one twin-extra long	private	dining table & chairs
Escondido Village / Escondido South low-rise	three	one	family with two or three children	\$2936/month	full year	65	875	one queen & two twins-extra long	private	dining table & chairs

Housing Rates and Contracts

Student housing charges fall below average local area rents. Housing charges, along with house dues and a technology fee, are billed each quarter. If you receive a salary through Stanford Payroll, you can make payments through payroll deduction.

Stanford housing rates and other fees include furnishings, utilities, phone, internet, coinless/cardless laundry, access to computer clusters, and common rooms such as lounges and game rooms in most complexes. Both academic-year and year-round contracts are available.

Note: Monthly rates are provided for comparison purposes. Housing is billed quarterly depending on the number of days in each quarter.

- Escondido Village
- Escondido Village Graduate Residences
- Escondido Village Kennedy Residences
- Escondido South
- Lyman Graduate Residences
- Munger Graduate Residence
- Rains Houses
- GSB Residences

GRADUATE INFORMATION CENTER

The Graduate Student Information Center (GSIC) will be open from September 7 through September 21, 2020 in the Graduate Community Center (second floor, Bogota Room 212, 750 Escondido Road). The Center provides general information about administrative, academic and student life issues, plus resources for graduate students on campus and in Stanford's surrounding area. For more information, please check glo.stanford.edu/glo-services/graduate-student-information-center.

GRADUATE STUDENT GATEWAY

The Graduate Student Gateway gradgateway.stanford.edu is a one-stop resource for incoming grad students providing important information before and after your arrival.

MOVING IN

- Check-ins are generally from 1 p.m. to 4 p.m. at your Housing Front Desk. Contact your Housing Front Desk if you need to check in earlier than the established move-in dates or outside of posted Front Desk hours: housingfrontdesks.stanford.edu.
- If you cannot check in during our business hours, Monday-Friday, 8 a.m. - 5 p.m., please call (650) 725-1602 for after-hours check-in assistance. When calling that number, a Student Housing representative will meet you at the respective Front Desk or designated area to provide you with your apartment keys. Please have your picture ID ready.
- Housing charges will be prorated based on your selection of the listed move-in dates.
- If you apply to move into housing the summer before starting your program, remember access to university facilities is not granted until you are an enrolled student.
- Pre-Clinical MD and MSPA students have a special process to request an earlier move in before orientation. Not all residences or group assignments will be available for early arrival.

MOVE-IN DATES, SUMMER 2020

QUARTER	DATE	STUDENT
Summer	June 20, 2020	General Start Date
	July 2, 2020	GSB Sloan Fellows

MOVE-IN DATES, 2020-21

QUARTER	DATE	STUDENT
Autumn	August 7, 2020	Students with school-age children
	August 20, 2020	Pre-clinical MD and MAPA students
	August 24, 2020	First-year law students
	August 28, 2020	Early arrival option for all students
	September 4, 2020	Early arrival option for all students
	September 9, 2020	Residents of the GSB Residences
Winter	September 11, 2020	All students
	December 31, 2020	All students
	Spring	March 27, 2021
Summer	June 19, 2021	All students

STUDENTS WITH SCHOOL-AGED CHILDREN

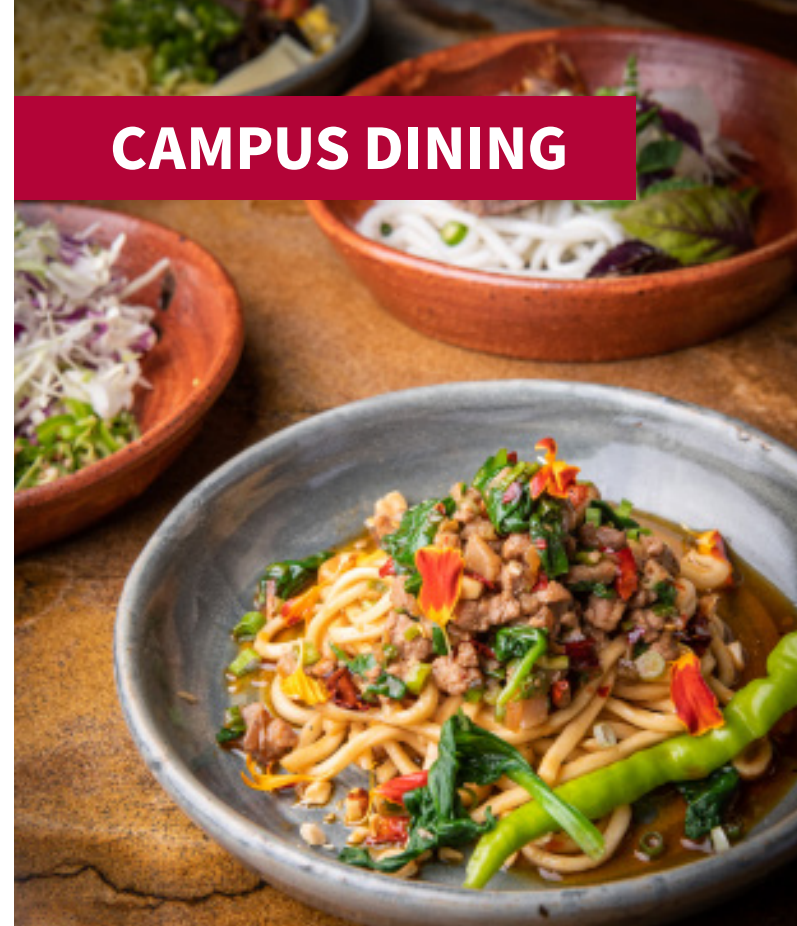
The Palo Alto Unified School District (PAUSD) is one of the top districts in the United States so it can be competitive to secure a space in the schools near campus for your child.

- You can begin the registration process once you have your apartment address (sent to you by early July) and finalize it after you move in.
- Once you have your address, go to pausd.org/registration/new-student-registration-process for information on how to register your child for school and what documents you need to provide.
- Although you won't have utility bills while living on campus, you can still obtain a bank account and cell phone bill with your new address.
- It is important that you ensure your child has had the appropriate immunizations so registration is not delayed. (Go to pausd.org for details.) The TB Risk Assessment form must be completed by a U.S. health professional. International students should plan on doing this as soon as possible after arrival in the U.S.
- There is a small possibility that there will not be space at the closest school to your home. If so, you will be assigned to another PAUSD school and have priority to move to the closest one when space is available.

VISITING CAMPUS OR ARRIVING EARLY?

The Stanford Guest House welcomes you with convenient, comfortable accommodations near campus. For more information, visit guesthouse.stanford.edu. Short-term housing is also available on campus through Stanford Conferences from August 17 to September 10, 2020. For more information, visit summerhousing.stanford.edu.

CAMPUS DINING



R&DE Cafés & Dining Halls

R&DE cafés – Forbes Family Café, the Axe & Palm, Alumni Café, Med Café, Olives Café, Law School Café, SLACafé, Decadence, Barbecue 101, Heirlooms, Kikka Sushi and Poke Bowl, Starbucks, Subway, Panda Express and the new pub and marketplace opening at Escondido Village Graduate Residences in the fall – offer convenient meal options for every taste. In addition, the Market at Munger offers one-stop shopping for campus-living essentials, including fresh produce, grab-and-go sandwiches and salads, bulk snacks, grocery staples, kosher groceries, sundries and more. **The new marketplace in EVGR will feature grocery staples, a delicious and convenient dinner meal option and a teaching kitchen to support making healthy meals in your apartment. For R&DE café locations and hours visit hospitality.stanford.edu.**

Cardinal Dollars is a convenient program that offers more value at R&DE cafes, Munger Market, and athletic concessions. Cardinal Dollars that you purchase online are loaded onto your Stanford ID card, offering the ease of a debit card with a 10% bonus up front. Visit cardinaldollars.stanford.edu. Plus, show your valid student ID to take advantage of the sales-tax exemption for food purchases in Stanford owned and operated cafés. Save nearly 20% by frequenting Stanford-operated retail locations.

Graduate students may also eat at any of eight **dining halls** across campus. Stanford Residential & Dining Enterprises (R&DE) offers award-winning dining services including:

- High-quality, seasonal, made from scratch, wholesome foods served at each of our eight all-you-care-to-eat dining halls with options from early morning to late night. All dining halls feature fresh salad and soup bar, variety of healthy entrées and grilled specials, fresh fruits and locally grown vegetables.
- A daily variety of delicious, nutritious options including vegetarian, vegan, gluten-free, kosher, halal, and nut-free food options.
- Accommodations for food allergies, sensitivities, and special dietary needs are offered through our Food Allergies @Stanford program.
- Monday-Friday continuous dining is offered at AFDC and Lakeside dining hall.
- Cooking classes available in the R&DE Teaching Kitchens in EVGR and AFDC
- There are many cultural dinner celebrations, like Día de Los Muertos, Lunar New Year, etc., in the dining halls throughout the year.
- We encourage you to discuss your individual needs with the R&DE Stanford Dining team, as they are here to help make it easy to eat well at Stanford.

Graduate students can save by purchasing meal blocks. Visit rde.stanford.edu/dining/meal-plans for more information.



CONTACT INFORMATION

R&DE Student Housing Assignments

408 Panama Mall, Suite 101, Stanford, CA 94305
studenthousing.stanford.edu
(650) 725-2810 | Fax (650) 736-1297

For questions, submit a ServiceNow request at
stanford.service-now.com/services

Bechtel International Center

bechtel.stanford.edu/
For questions relating to issuance of 1-20s/DS-2019s,
applications for visas and other immigration related questions

Community Housing

offcampus.stanford.edu
(650) 723-3906

Graduate Life Office

glo.stanford.edu
(650) 736-7078

Office of Accessible Education

oe.stanford.edu
(650) 723-1066

Office of the Senior Associate Vice Provost for R&DE

554 Salvatierra Walk #126, Stanford, CA 94305
rde.stanford.edu
(650) 721-2956

R&DE Student Housing

housing.stanford.edu
(650) 725-1600

R&DE Stanford Dining

dining.stanford.edu
(650) 723-4751

R&DE Stanford Hospitality & Auxiliaries

hospitality.stanford.edu
cardinaldollars.stanford.edu
(650) 725-1510

Stanford Guest House

guesthouse.stanford.edu
(650) 926-2800

Visitor Information

stanford.edu/dept/visitorinfo
(650) 723-2560

Parking & Transportation

transportation.stanford.edu
(650) 723-9362

